

[Patients](#)
[practitioner](#)
[Log in](#) [Print this page](#)
[Why Metagenics?](#)
[Products](#)
[TLC Programs](#)
[Resource Center](#)
[Science](#)

Products: Product Catalog: **Insinase™**

[Purchase Products](#)
[Product Catalog](#)
[Products FAQ](#)
[Pure & Safe Ingredients](#)

**Search for Product
or Ingredient:**

or browse by product name:

**# A B C D E F G H I J K L M
N O P Q R S T U V W X Y Z**

**Search for Product
by Category:**

Metagenics Product Catalog



[Download PDF](#)

6,301K



Adobe® Acrobat Reader required

Insinase™

Selective Kinase Response Modulators for Healthy Insulin Function◆

Recommendations: Three tablets daily or as directed by your healthcare provider.

Form: 90 Tablet Bottle



 Suitable for vegetarians

Product Description:

Insinase features selective kinase response modulators (SKRMs)—RIAA and acacia—which have been clinically shown in a preliminary study at the FMRC* to improve fasting insulin and lipid parameters.◆

- ◆ Ground-breaking preliminary research suggests that SKRMs modulate kinase signals in favor of good health◆
- ◆ Designed to modulate kinase signaling (within cells) in favor of healthy insulin function and blood sugar transport◆
- ◆ Balanced kinase signaling helps to maintain healthy blood sugar and triglyceride regulation◆
- ◆ Developed through the ExpresSyn® Process—which combines proteomic research, safety evaluations, and human clinical research to set a new standard of clinical certainty in nutritional supplements

THREE TABLETS SUPPLY:

A proprietary blend of:

Reduced Iso-Alpha Acids

Acacia Bark and Heartwood Extract (*Acacia nilotica*)

540 mg

*FMRC (Functional Medicine Research CenterSM) is the clinical research arm of Metagenics.

Warning: Do not use if taking anticoagulants. If pregnant or nursing, or taking medication, consult your healthcare practitioner before use.

Disclaimer: In order to ensure proper use of our high-quality nutritional supplements, Metagenics only sells to licensed healthcare practitioners. The products listed in this online catalog are available in the United States and

may not be available in other countries. In addition, certain formulas may be slightly different outside the US.

ADDITIONAL PRODUCT INFORMATION: 

 [Blood Sugar Clinical Guide](#)

 [Insinase Doctor Brochure](#)

 **Requires [Adobe Acrobat Reader](#).**

◆ These statements have not been evaluated by the Food and Drug Administration. These products are not intended to diagnose, treat cure, or prevent any diseases.

[Terms and Conditions of Use](#)

[Privacy Policy](#)

©2007 Metagenics, Inc.

*Scientific Breakthrough
for Healthy Insulin Function*♦

Insinase™

**Selective Kinase Response Modulators
for Healthy Insulin Function**♦

Patient Benefits:

- ▶ Proprietary formula featuring selective kinase response modulators (SKRMs)—RIAA and acacia—which have been clinically shown in a preliminary study at the FMRC* to improve fasting insulin and lipid parameters♦
- ▶ Modulates kinase signaling in adipocytes. These fat-storing cells are involved in glucose utilization and insulin signaling♦
- ▶ Balanced kinase signaling helps to maintain healthy blood sugar and triglyceride regulation♦
- ▶ *In vitro* testing of the active ingredients has demonstrated inhibition of IL-6 cytokines—which influence insulin function♦

The ExpressSyn Difference:

- Research demonstrates efficacy and a high level of predicted safety.
 - ▶ Cell proteomic research
 - ▶ Human clinical research

* FMRC (Functional Medicine Research CenterSM)
is the clinical research arm of Metagenics.



Ground-breaking preliminary research suggests that SKRMs modulate kinase signals in favor of **healthy insulin function**.♦

Scientifically Tested, Clinically Demonstrated

Results Backed By Science

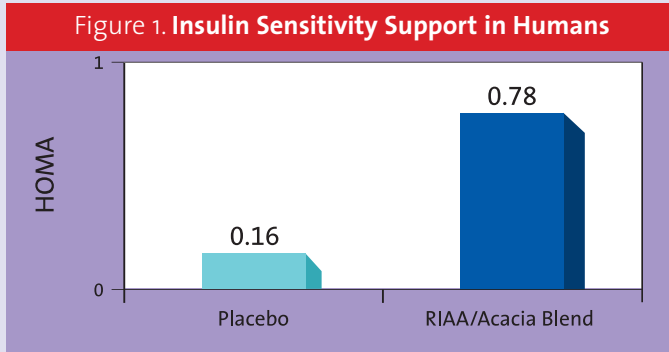
Metagenics has tested over 200 natural substances and extracts for their influence on insulin responses in adipocyte cells. The best performers were selected for further scientific testing, then evaluated in a human clinical study. (Figures 1-3).[♦]

Why Patients May Benefit From Insinase

Many prevalent health issues—including those related to insulin function—have been found to have specific underlying kinase signaling components. Developed through the ExpresSyn Process, Insinase provides SKRMs in the forms of RIAA and acacia to help modulate kinase signaling in favor of good health.[♦]

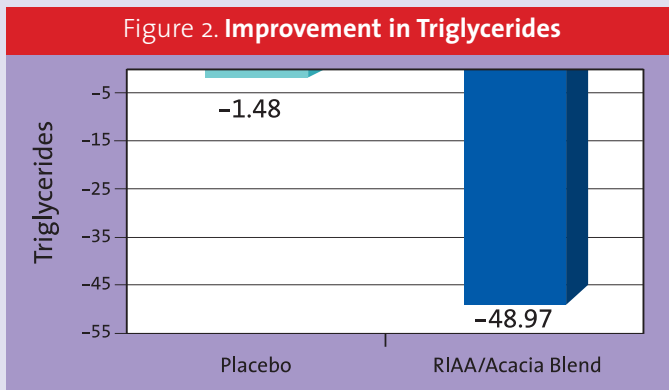
CLINICALLY TESTED INGREDIENTS

Figure 1. Insulin Sensitivity Support in Humans



The Homeostasis Model Assessment (HOMA) estimates steady state beta cell function and insulin sensitivity.

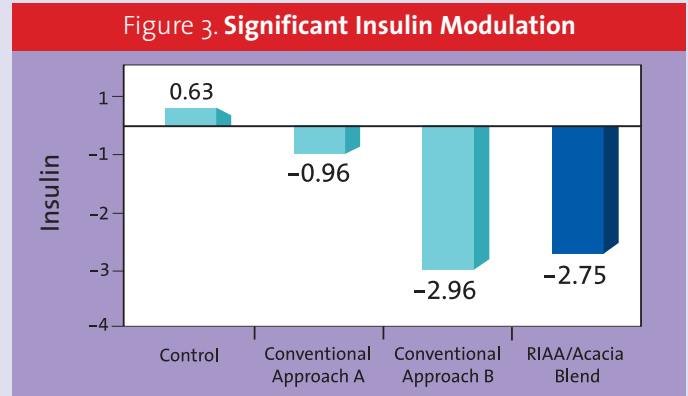
Figure 2. Improvement in Triglycerides



In an 8-week blinded, placebo-controlled study of 91 patients, a RIAA/acacia blend was found to support a healthy insulin response and healthy triglyceride levels.[♦]

ADDITIONAL SUPPORTIVE RESEARCH

Figure 3. Significant Insulin Modulation



In a mouse model, the RIAA/acacia blend was comparable to leading conventional approaches.[♦]

FORMULA

Three Tablets Supply:

A proprietary blend of Reduced Iso-Alpha Acids and Acacia Extract (*Acacia nilotica*) 540 mg

Recommendations: Three tablets daily

Form: 90 Tablet Bottle

Reference

1. Robert H. Lerman, MD, PhD, Matthew L. Tripp, PhD, Jeffrey S. Bland, PhD. Double-blind, placebo-controlled trial examining the effects of RIAA/acacia supplementation on insulin homeostasis. Functional Medicine Research Center, the clinical arm of Metagenics, Inc., Gig Harbor, WA.

[♦] These statements have not been evaluated by the Food and Drug Administration. This product is not intended to diagnose, treat, cure, or prevent any disease.



Genetic Potential Through Nutrition
www.metagenics.com
©2006 Metagenics, Inc.
MET1354 7/06

Nutritional Management of Blood Sugar Levels*



Blood sugar concerns are on the rise*

According to recent statistics, an estimated 20.8 million Americans—7 percent of the population—have blood sugar concerns. Now more than ever your patients need guidance on how to achieve and maintain blood sugar homeostasis for their long-term health.*

Your guide to advanced blood sugar management*

In this clinical guide, you'll find product descriptions, recommendations, and a quick reference tool explaining how to address:

- Blood sugar levels*
- Body composition*
- Cardiovascular health*

Metagenics' commitment to excellence

Metagenics is dedicated to providing science-based, premium quality nutraceuticals and medical foods that represent the forefront of natural health science. This commitment is reflected in our use of cutting-edge genetic, cellular, and clinical testing procedures and NNFA, NSF, and TGA GMP-certified facilities for production of high quality formulations.

Safety

Research

Efficacy

Managing blood sugar with targeted nutritional support♦

Metabolic Syndrome and Altered Body Composition

UltraMeal®

Medical food for metabolic syndrome

Clinically tested UltraMeal is a medical food designed to nutritionally support the management of conditions associated with metabolic syndrome.

Recommended uses:

- Altered body composition
- Central obesity
- Insulin resistance

Patient benefits:

- Promotes the loss of fat while helping to maintain lean muscle mass
- Provides a low-glycemic-index meal option with all essential vitamins and minerals
- A dairy-free source of calcium for bone health
- Available in 7 delicious flavors—
 - Vanilla
 - Dutch Chocolate
 - Strawberry Supreme
 - Mocha
 - Banana Blast
 - Country Peach
 - Raspberry

Also available: *UltraMeal® Bar* medical food as well as *whey and rice protein options*.



Metabolic Syndrome and Cardiovascular Disease

UltraMeal® Plus

Medical food for metabolic syndrome and cardiovascular disease

Clinically tested UltraMeal Plus is a medical food designed to nutritionally support the management of conditions associated with metabolic syndrome and cardiovascular disease. Features a proprietary blend of soy protein and 2 grams of plant sterols per serving in accordance with NIH recommendations.

Recommended uses:

- Hypercholesterolemia
- Hypertriglyceridemia
- Hypertension

Patient benefits:

- Nutritionally supports the management of metabolic syndrome and cardiovascular disease issues
- Provides a heart-healthy meal option with all essential vitamins and minerals
- Good source of fiber
- Available in 4 delicious flavors
 - Vanilla
 - Dutch Chocolate
 - Mocha
 - Banana Blast



Type 2 Diabetes and Hypoglycemia

UltraGlycemX®

Medical food for dysglycemia

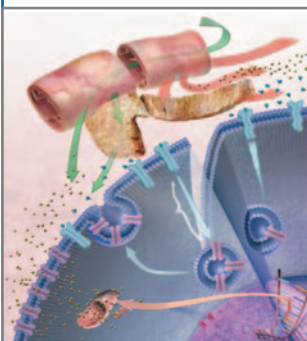
UltraGlycemX provides a clinically tested, low-glycemic-index medical food to nutritionally support the management of conditions associated with dysglycemia. UltraGlycemX contains specialized nutrients—such as chromium, cinnamon, alpha-lipoic acid, vanadium, vitamin E, biotin, and magnesium—to support insulin receptor sensitivity and function, as well as insulin-stimulated glucose disposal.

Recommended uses:

- Type 2 diabetes
- Hypoglycemia

Patient benefits:

- Supports healthy insulin and glucose metabolism
- Protects against oxidative stress
- Provides a blend of specific fibers to support blood sugar management
- Available in 2 delicious flavors
 - Original
 - Chocolate



The Role of Insulin in Managing Blood Sugar

After a meal, dietary carbohydrates are broken down into simple sugars and directly absorbed into the bloodstream, causing blood sugar levels to rise. This rise in blood glucose signals beta cells in the pancreas to secrete insulin into the bloodstream. Insulin binds to cellular receptors and enables glucose to enter the cell, where it is burned for energy or stored for future use.

When blood glucose levels are consistently high, cellular receptors may lose their ability to respond properly to insulin. The pancreas attempts to overcome this lack of an appropriate response by secreting even greater amounts of insulin, causing serious health problems over time.

Healthy Blood Sugar♦

MetaGlycemX™

Nutritional support for healthy blood sugar♦

MetaGlycemX is a scientifically advanced formula that includes a unique combination of green tea, cinnamon, and alpha-lipoic acid—along with a comprehensive foundation of nutrients—to be used as part of a healthy diet to help maintain healthy blood sugar.♦

Recommended use:

- Healthy blood sugar support♦

Patient benefits:

- All-natural, convenient, easy-dose tablets
- Features green tea catechins (EGCG), shown to protect the insulin-secreting pancreatic islet cells♦
- Supplies bioactive cinnamon compounds that potentiate insulin activity♦
- Provides alpha-lipoic acid, a free radical scavenger that also enhances insulin sensitivity♦
- Delivers a sophisticated and comprehensive blend of targeted micronutrients and antioxidants to support healthy glucose metabolism♦

Two tablets supply: Vitamin C (as ascorbic acid) 300 mg, Vitamin E (as d-alpha tocopheryl succinate) 200 IU, Thiamin (as thiamin mononitrate) 15 mg, Riboflavin 9 mg, Niacin (as niacinamide) 90 mg, Pantothenic Acid (as D-calcium pantothenate) 30 mg, Vitamin B₆ (as pyridoxine hydrochloride) 9 mg, Vitamin B₁₂ (as cyanocobalamin) 150 mcg, Biotin 2 mg, Folate (as folic acid) 400 mcg, Zinc (as zinc glycinate) 9 mg, Copper (as copper lysinate hydrochloride) 0.75 mg, Manganese (as manganese citrate) 1.2 mg, Chromium (as chromium polynicotinate) 600 mcg, Selenium (as seleno-methionine) 90 mcg, Vanadium (as vanadyl sulfate) 0.5 mg, Alpha-Lipoic Acid 100 mg, L-Carnosine 50 mg, Taurine 300 mg, Chinese Cinnamon Bark (*Cinnamomum cassia*) 500 mg, Catechins 100 mg, Epigallocatechin Gallate (EGCG) (from decaffeinated green tea leaf, *Camellia sinensis*) 66.5 mg

Recommendations: One to two tablets two times daily.

Form: 60 and 120 Tablet Bottles (Vegetarian)



Healthy Insulin Function♦

Insinase™

Selective Kinase Response Modulators for healthy insulin function♦

Insinase offers a scientifically demonstrated formula—derived from a uniquely combined ratio of reduced iso-alpha acids (RIAA) and acacia extract designed to support healthy insulin sensitivity and triglyceride levels.♦

Recommended uses:

- Healthy insulin function♦
- Healthy glucose utilization♦
- Healthy metabolic function♦

Patient benefits:

- Proprietary formula featuring selective kinase response modulators (SKRMs)—RIAA and acacia—which have been clinically shown in a preliminary study at the FMRC* to improve fasting insulin and lipid parameters♦
- Modulates kinase signaling in adipocytes. These fat-storing cells are involved in glucose utilization and insulin signaling♦
- Balanced kinase signaling helps to maintain healthy blood sugar and triglyceride regulation♦
- *In vitro* testing of the active ingredients has demonstrated inhibition of IL-6 cytokines—which influence insulin function♦

Three tablets supply: A proprietary blend of Reduced Iso-Alpha Acids and Acacia Extract (*Acacia nilotica*) 540 mg.

Recommendations: Three tablets daily.

Form: 90 Tablet Bottle

* FMRC (Functional Medicine Research CenterSM) is the clinical research arm of Metagenics.



The ExpressSyn Process: Setting a New Standard in Clinical Certainty

Since its inception, Metagenics has introduced many innovative “firsts” that have raised the bar of quality and effectiveness in the natural healthcare industry. Building on this legacy, Metagenics’ research scientists have developed the ExpressSyn Process—the most significant product development innovation in the history of nutritional supplements.

The ExpressSyn Process combines **cell proteomic research, safety evaluations,** and **human clinical research** to demonstrate efficacy and a high level of predicted safety for the line of ExpressSyn products. *The ExpressSyn Process has set a new standard of clinical certainty in nutritional supplements.*



ExpressSyn Breakthrough: SKRMs

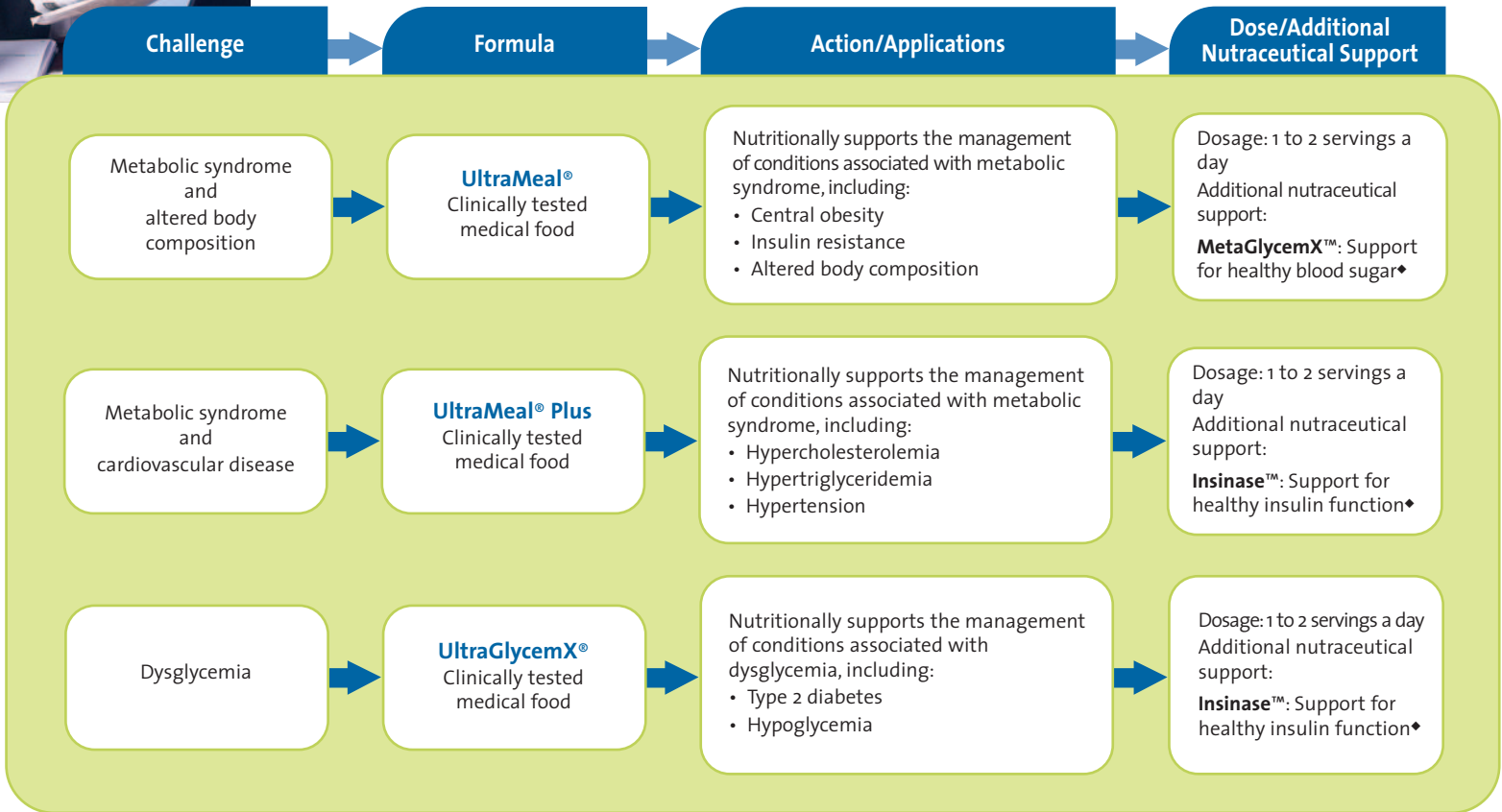
There are 540 known kinases—enzymes involved in key metabolic processes—that translate good food choices into signals of good health and poor food choices into signals of poor health. *The remarkable discovery about kinase activity is that it has been correlated with the development of lifestyle issues related to insulin function and many other physiological activities.♦*

Metagenics has scientifically tested SKRMs that specifically target insulin function—leading to the development of Insinase. This formula is designed to modulate kinase signaling in favor of healthy insulin sensitivity and glucose transport.♦

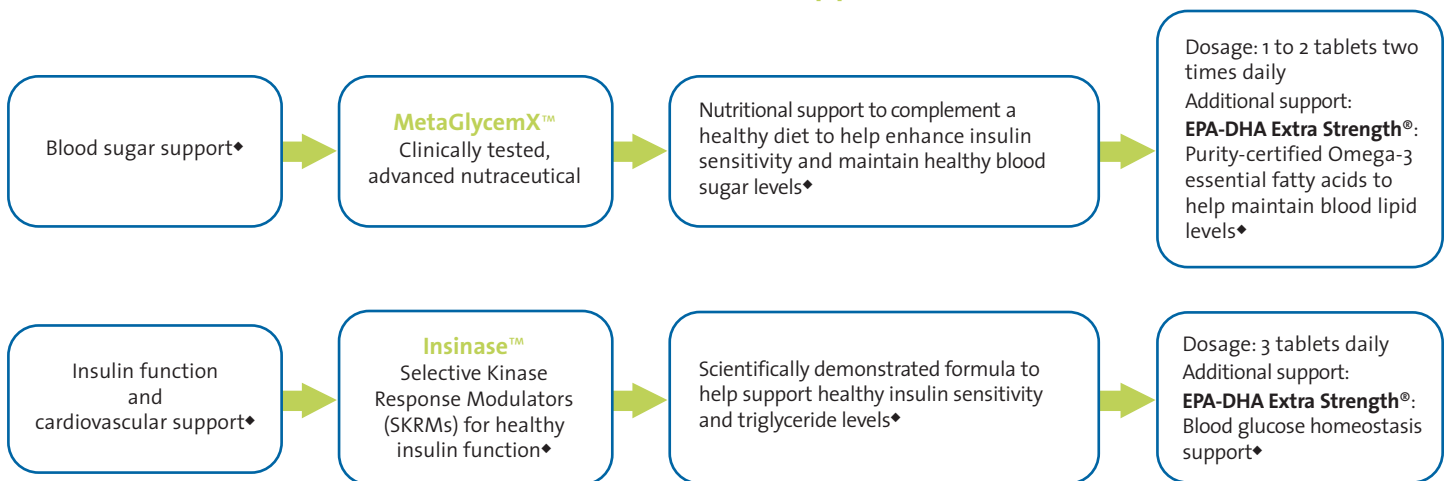


Natural approaches to blood sugar management* from Metagenics.

Which should you choose for your patients?



Nutraceutical Support



For more information visit us online at www.metagenics.com or contact our Technical Support Department.

♦These statements have not been evaluated by the Food and Drug Administration. These products are not intended to diagnose, treat, or prevent any disease.



These certifications for Good Manufacturing Practices demonstrate the Metagenics commitment to purity and quality.

©2006 Metagenics, Inc.
MET1128 3/05 Rev 6/06